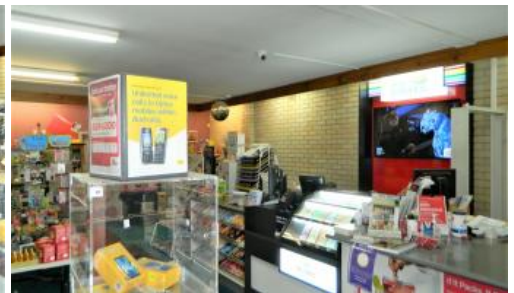


Sold



78 Louee St, Rylstone



## Ideal Investment Opportunity

Located in the main street of Historic Rylstone Village, this retail commercial building is situated on a 676 sqm block with rear lane access for parking.

122 sqm of showroom, excellent long term tenants until November 2023 with a 3 year option, makes this a secure investment for the astute buyer. Currently returning \$220 per week or \$11,440.00 per annum.

With a RU5 village zoning there is a opportunity for a development at the rear subject to council approval.

Don't miss out, inspection strictly by appointment only.

The above information provided has been furnished to us by the vendor/s. We have not verified whether or not that information is accurate and do not have any belief in one way or the other in its accuracy. We do not accept any responsibility to any person for its accuracy and do no more than pass it on. All interested parties should make and rely upon their own inquiries in order to determine whether or not

4 676 m2

Price	SOLD for \$310,000
Property Type	Commercial
Property ID	351
Land Area	676 m2
Warehouse Area	122 m2

### Agent Details

Andrew Shipman - 0423 690 336  
Jacqui Shipman - 02 6379 6668

### Office Details

Shipman's Real Estate  
16 Angus Ave Kandos NSW 2848  
Australia  
02 6379 6668



this information is in fact accurate.

