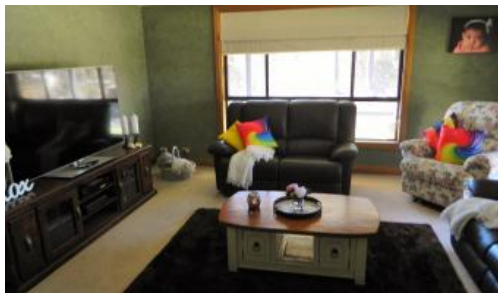


Sold



1 Nevell St, Clandulla



Executive Home on Acres

Magnificent and master built luxurious sandstone home is situated on a 3.40 acre, tree studded allotment with panoramic rural and mountain views.

This Homestead, with a wrap around verandah, features five double bedrooms all with built ins, large solid Tasmanian Oak kitchen with all inclusions, formal and informal living areas, large bathroom. The ensuite has been fully renovated to accommodate the elderly or disabled, if required. All of this with reverse cycle ducted air conditioning for all year-round comfort, solar system and combustion fireplace.

The property is centrally positioned only a short 7km (approx.) from the local schools (bus pick up/drop off at front gate) and shops of Kandos; and only another 7km to the town of Rylstone. It is also only 45 mins to Mudgee; 1.5hrs to the Blue Mountains, and less than 3 hrs to Sydney.

Connected to town water and rain water tanks makes easy work of the low maintenance established yards & gardens with natives that

🏠 5 🛏 2 🚗 7

Price SOLD for \$800,000

Property Type Residential

Property ID 364

Land Area 3.40 ac

Floor Area 250 m2

Agent Details

Jacqui Shipman - 02 6379 6668

Andrew Shipman - 0423 690 336

Office Details

Shipman's Real Estate

16 Angus Ave Kandos NSW 2848

Australia

02 6379 6668



attracts the bird life. A colourbond double lock up garage, additional separate workshop with attached carport all with power and a private gazebo/BBQ area to entertain friends and family or just chill out and "live the dream".

This property ideal for large families, retiree's seeking space peacefulness, or a holiday house for a city getaway. Definitely a place you would be proud to call "HOME"

To book an inspection, call Andrew on 0423 690 336

The above information provided has been furnished to us by the vendor/s. We have not verified whether or not that information is accurate and do not have any belief in one way or the other in its accuracy. We do not accept any responsibility to any person for its accuracy and do no more than pass it on. All interested parties should make and rely upon their own inquiries in order to determine whether or not this information is in fact accurate.